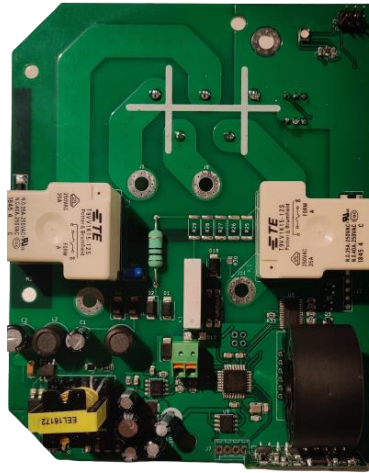


Single-Board EV Controller



The Deltrix Single Board EV Charging Controller allows integrators to build their own simple but yet safe EV Charging Stations that support from 3.6KW or 7,4KW on a single phase to 11KW on 3 phases and where all components including the relays and DC fault protection are integrated onto a single PCBA.

Controller Board - Physical

Dimensions (LxWxH)	108mm x 83mm x 44mm
Weight	200 grams
Mounting Process/options	3 holes
Embedded microcontroller	Atmel
Firmware	Embedded
Onboard temperature monitoring	Yes, in micro-controller
Power supply	On-board
Pluggable connectors	Charging Socket + Mains Supply + PP and CP
Reprogrammable Firmware	Yes, with clip-on connector

Controller Board - Electrical

Mode	3 (IEC 61851-1 / SAE J1772 compliant communication protocol)
Power Rating	Power Rating: 3.6KW, 16A, 7.4 KW, 32A or 11KW, 16A on 3 Phases
Current Settings	10-Step adjustable charging current (Amps: 6, 8, 10, 12, 13, 16, 18, 20, 25, 32)
Earth Leakage Protection	Embedded ground fault sensor (RCM14 for DC current max 6 mA) Optional AC (30mA) + DC (6mA)
Status Lighting (On-Board LED)	LEDs with Clear, Connected & Charging (for use with LED Pipe)
On board relays	1 x 35A or 3 x 40A
Phases	Single Phase
Supply Connections	L1, L2, L3, N, PE 2.5 - 1mm ²
Nominal Supply	230VAC 50Hz
Over Current Protection	40A Supply
Standby Power Consumption	~1W

Controller Board - Interfacing

RFID	No
Buzzer	No
kWh energy meter support	Optional
Contactor Weld Detect	Yes
T2 Socket Lock controller	Yes
Proximity Pilot & Control Pilot	Yes
LCD Support	No
CAN-bus	No
Ethernet interface	No
RCD status	Trip Detect
Contactor enable	On board relays
GSM Antenna & GPS Antenna	No
Penta band 3G/GSM modem	No
GPS global positioning	No
Local Load Balancing (Master/Slave)	No
I ² C Bus Connector	For custom Add-on Boards (please request a quote) e.g. RFID, Key locking, Fan Control, load balancing, etc.

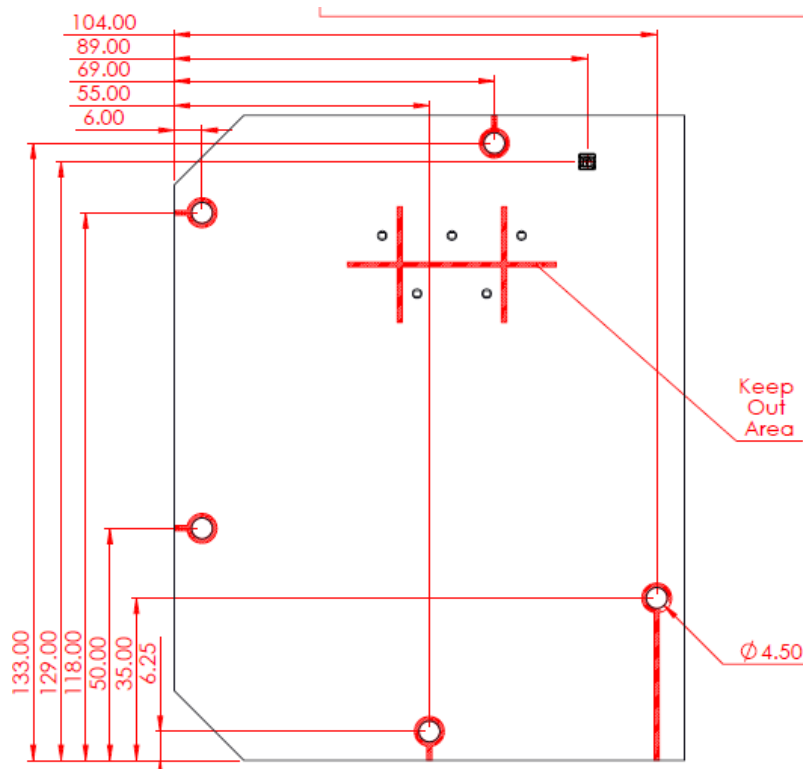
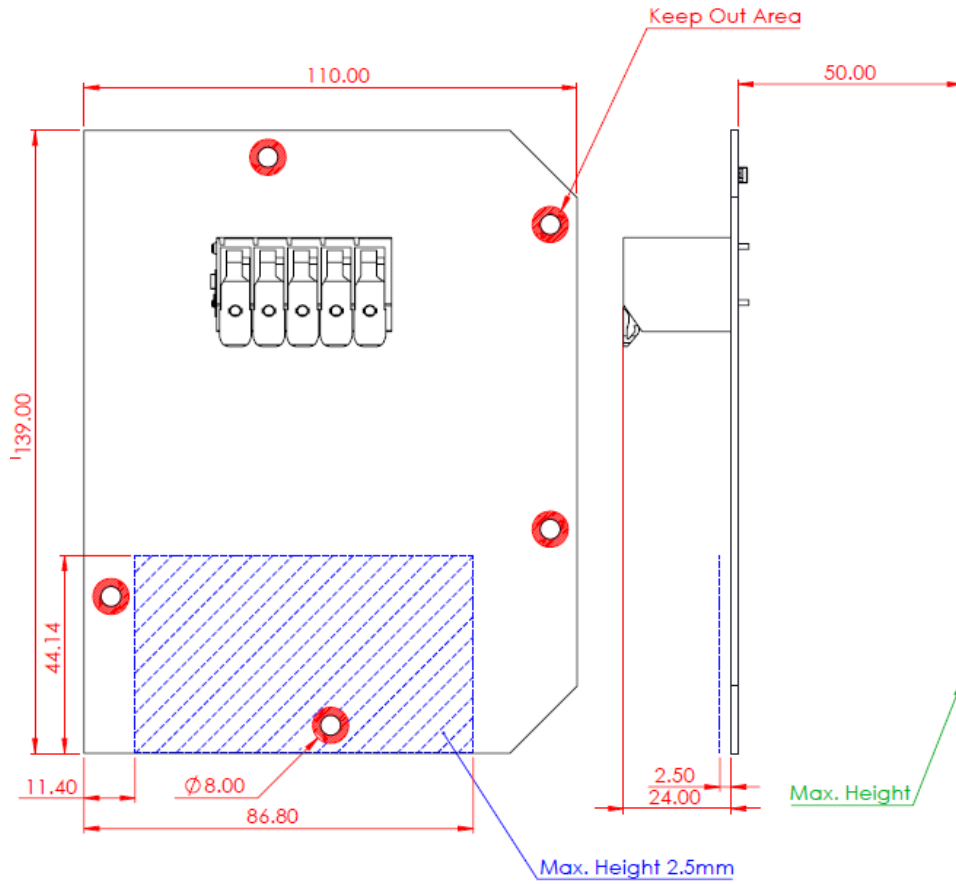
Part Numbers

Single Board Controller - 1 Phase	DEMSBEVC-1-1
Single Board Controller - 3 Phase	DEMSBEVC-3-1 (Nov. 2020)

Controller Board – Rear side with connector block



Controller Board: Dimensions



Controller Board: Current Settings (using rotary switch)

Set the maximum charging current with the knob on the printed circuit board according to the following table:

POS	0	1	2	3	4	5	6	7	8	9
	6A	7A	8A	9A	10A	13A	14A	15A	16A	18A

Controller Board: LED Status

The charger has an LED that lights up in either green, yellow, blue or red.

Green	The charger is ready
Yellow	The cable is connected to the charging box (but may not be the car), but it does not charge or finish charging
Blue	Charging is in progress
Red	Contact an authorized electrical installer

EU HQ, Sales & Marketing – Ireland

Deltrix (Europe) Limited
Block 1, Unit 1A
Bracken Road
Sandyford
Dublin D18 H283
Ireland

Tel.: +353 (1) 5390606
E-Mail: info@deltrixchargers.com

Sales & Marketing – Germany

Deltrix (Europe) Limited
Max-Planck-Straße 4
85609 Aschheim-Dornach
Germany

Tel.: +49 (89) 215 385 23
E-Mail: info@deltrixchargers.com