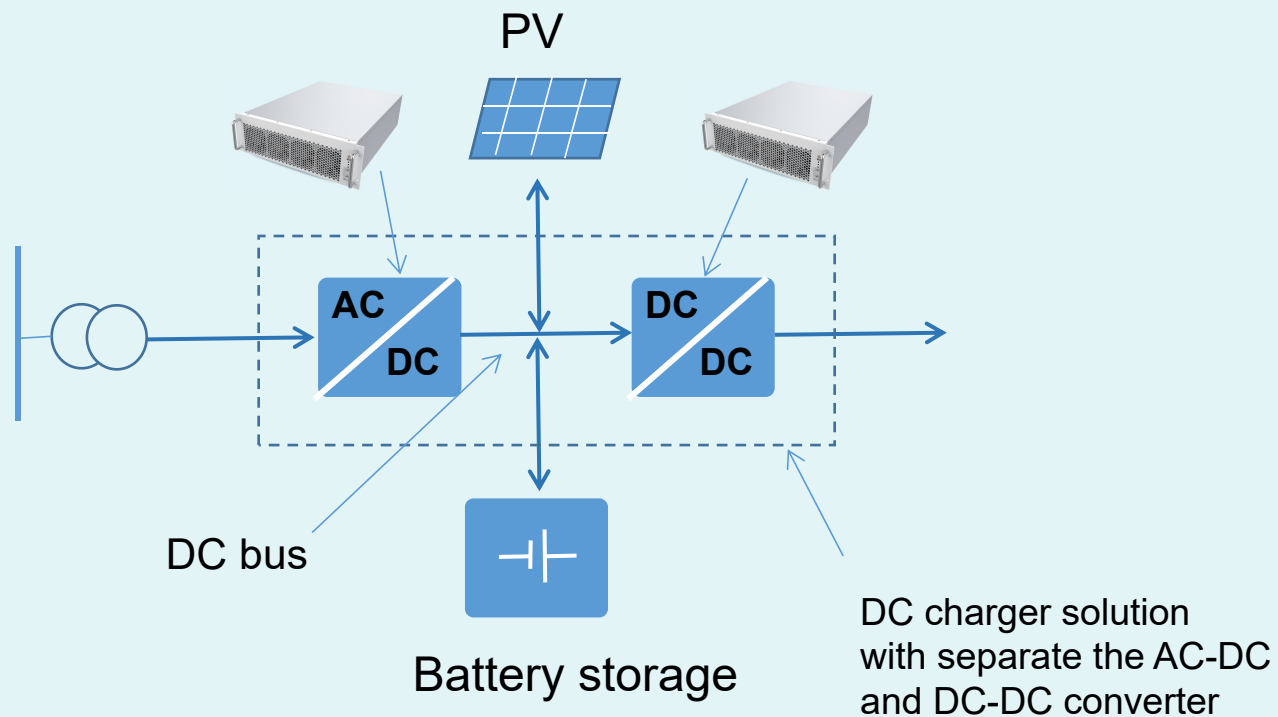


# **the flexible solution for EV charger**

by Kim Fu  
2020/01/13

# New product platform for EV charger



- separate the AC-DC and DC-DC converter to make a DC bus to connect PV and battery
- with the bi-directional solution in same size complaint the V2G
- independent bi-directional AC-DC and DC-DC for energy store application
- DC-DC converter for DC source charger



# The Product Family

## EVA863

850V@62.5kW Rectifier



- on sale
- work with EVD

## EVBA863

850V@62.5kW  
bi-directional  
AC-DC converter



- on plan
- upgrade from EVA
- for grid connected or island
- work with EVBD and battery

## EVD960

950V@60kW DCDC converter



- on sale
- work with EVA

## EVBD960

950V@60kW  
bi-directional  
DCDC converter



- on plan
- upgrade from EVD
- work with EVBA and battery

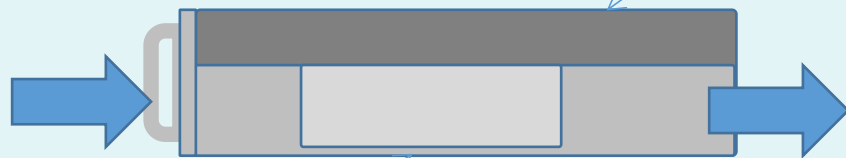
# The Product Family

air dust is impotent for the reliability

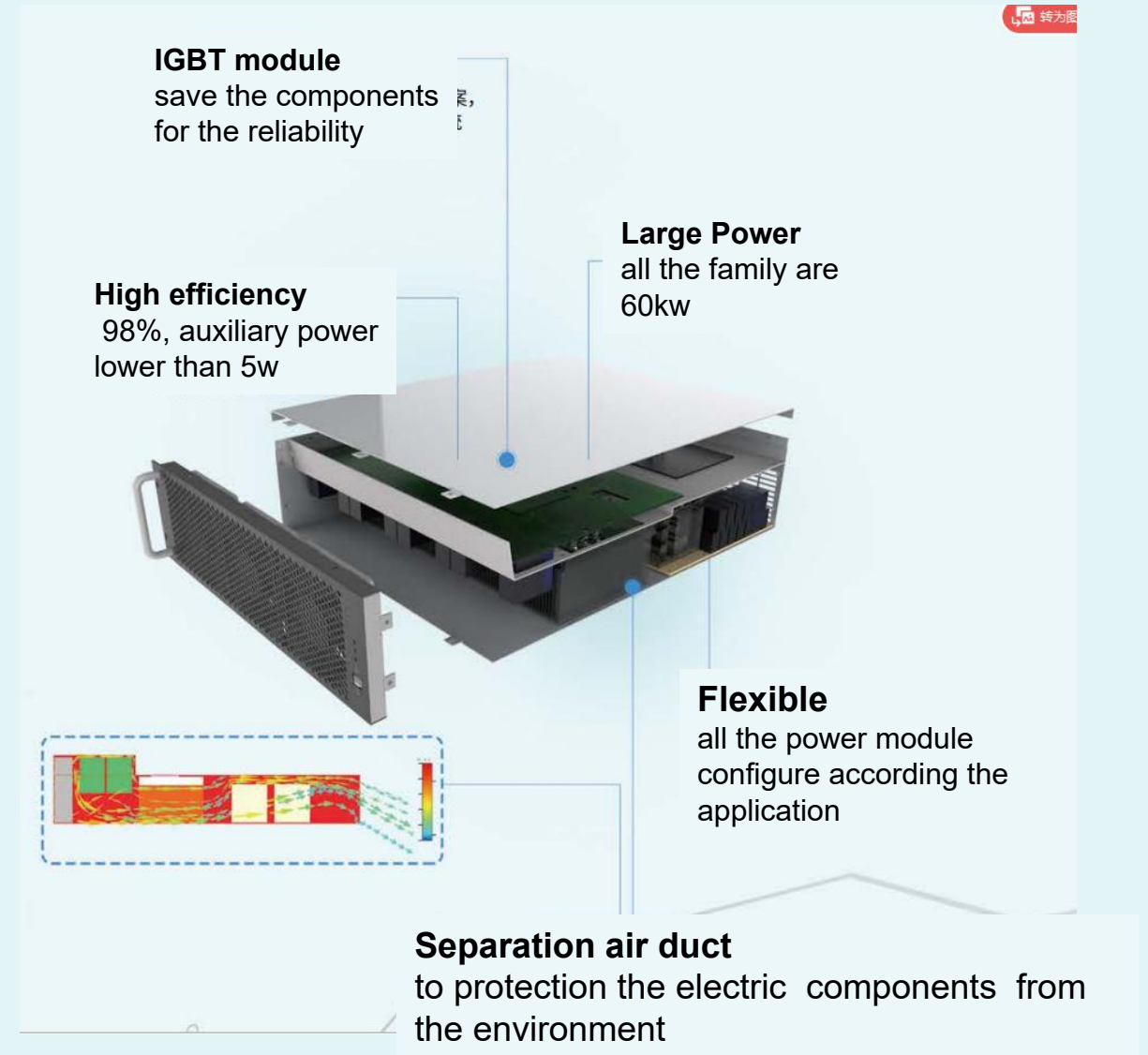


**Non-separation duct power module  
2-3years later inside**

components has been sealed  
in the upper chamber



Heat radiator in the ventilation duct for cooling  
**separation duct power module**



转为图

**IGBT module**  
save the components  
for the reliability

**High efficiency**  
98%, auxiliary power  
lower than 5w

**Large Power**  
all the family are  
60kw

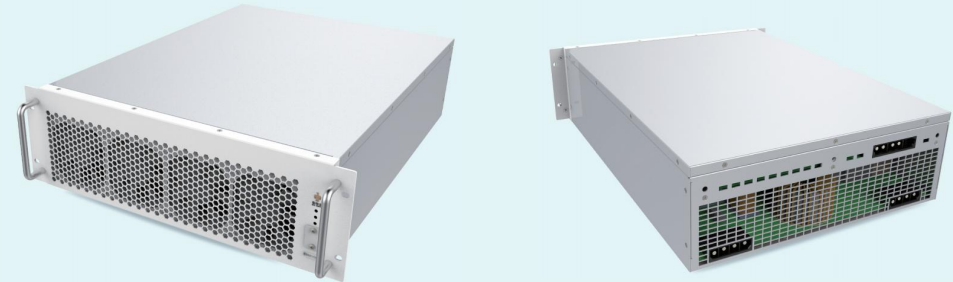
**Flexible**  
all the power module  
configure according the  
application

**Separation air duct**  
to protection the electric components from  
the environment

# EVA863

850V@62.5kW Rectifier

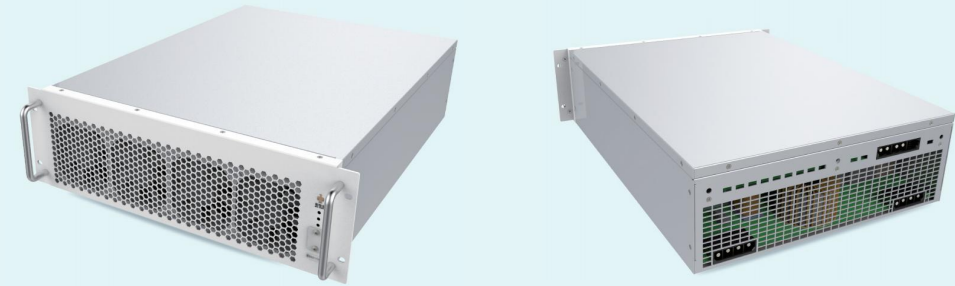
<b>AC Input</b>	
Input voltage range	320Vac~530Vac, 3phase without neutral
MAX input current	<120A
Frequency range	45Hz ~ 65Hz
Power factor	≥0.99
Efficiency (full load)	>98.2%
THD(total harmonic distortion)	<5%
<b>DC output</b>	
Output power	62.5kw
Output voltage range	570 ~ 850Vdc
MAX Output current	100A
voltage stabilized accuracy	< ±0.5%
Current stabilized accuracy	≤±1% (output power in 20% ~ 100%)
<b>Mechanic</b>	
Dimension	125mm (H) ×360mm (W) ×490mm (D)
Weight	≤19kg



- separation air duct to protection the electric components from the environmental
- high efficiency to 98.2%
- CAN bus for controlling

# EVD960

950V@60kW DCDC converter



<b>DC Input</b>	
Input voltage range	560Vdc~850Vdc
MAX input current	<75A
Efficiency (full load)	>98.2%
<b>DC output</b>	
Output power	60kw
Output voltage range	300 ~ 950Vdc
MAX Output current	90A
voltage stabilized accuracy	< ±0.5%
Current stabilized accuracy	≤±1% (output power in 20% ~ 100%)
<b>Mechanic</b>	
Dimension	125mm (H) ×360mm (W) ×490mm (D)
Weight	≤22kg

- separation air duct to protection the electric components from the environmental
- high efficiency to 98.2%
- CAN bus for controlling
- isolation between input and output